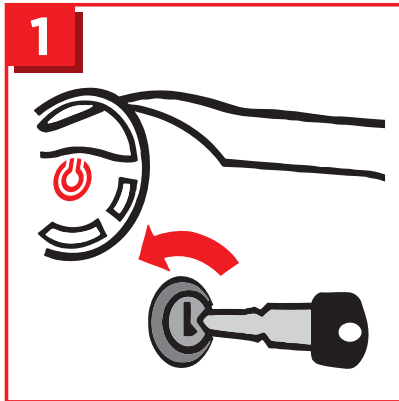


LPG VEHICLE REFUELLING INSTRUCTIONS

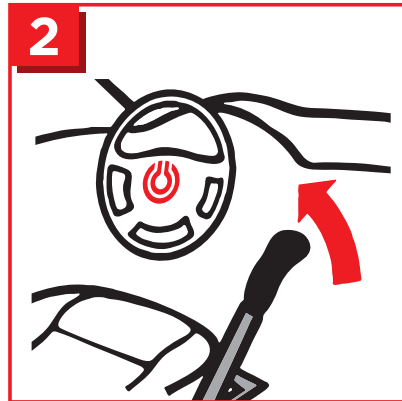
Safety guidelines on how to use the fuelling nozzle



Always wear safety glasses and gloves when handling the fuelling nozzle. If you are unsure what to do or experience any difficulties, summon the station attendant using the bell. These instructions do not permit you to handle other parts of the LPG station equipment.



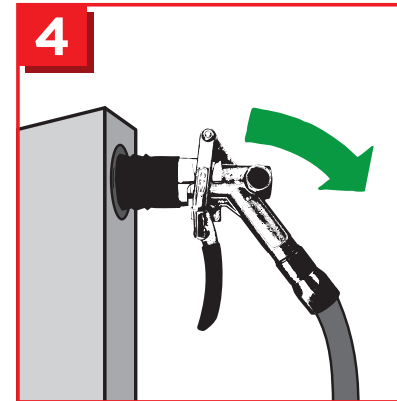
1. Switch off the vehicle's engine and auxiliary heating.



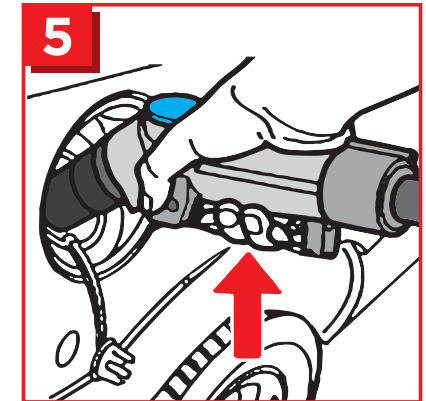
2. Apply the handbrake.



3. Put on safety glasses and gloves.



4. Remove the fuelling nozzle from the dispenser stand.



5. Insert the nozzle into the vehicle's filler neck and lock it into the refuelling position by pressing the trigger.



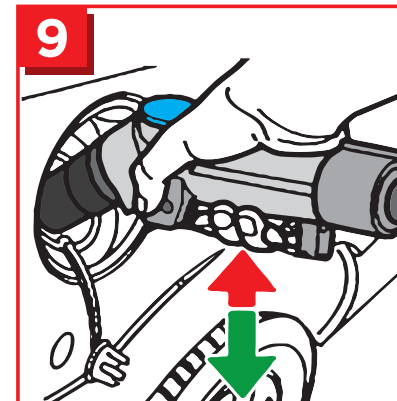
6. To begin refuelling, press the refuelling button/switch on the stand.



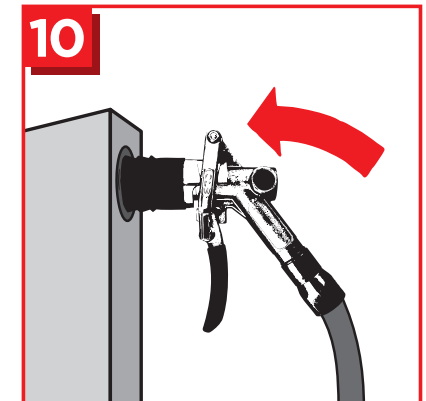
7. You can stop refuelling at any time by pressing the refuelling button on the stand.



8. If the gas leaks, you can halt the refuelling process immediately by pressing the red **STOP** button.



9. Once refuelling is complete, unlock the nozzle by pressing the trigger.



10. Remove the nozzle from the vehicle's filler neck and return it to the dispenser stand.